



Engaging and re-engaging members & friends of St. John's

# Why We Do What We Do

ROGER HELLMAN

**This is an important consideration for all organizations, and thriving churches ask this question often with an ever-dominant objective: to honor and glorify our Heavenly Father!**

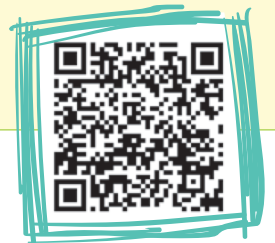
A dedicated group of our members, representing a good cross section of interests, has been preparing, discerning, and meeting to clarify this with the intention to provide uniform direction for ministries, guidance for staff, and guidance for each of us. When we all pull in the same direction, we achieve great accomplishments, pleasing to our Father.

The task force prepared by reading *Canoeing the Mountains*, by Tod Bolsinger, and then focused on Paul's message to the Romans and Corinthians. They discerned with ideas from congregational consultants, Dan Hotchkiss and Susan Beaumont.

After meetings, discernment, prayer, and discussion, the task force chose four all-encompassing words as our new core values: **WORSHIP, LOVE, GROW, and GIVE**. We practice these core values authentically, intentionally, faithfully, and generously in order to fulfill our mission to **engage and equip people to embrace Jesus Christ**.

I appreciate the work of the Spirit in the efforts of this task force and in every aspect of our church. Praise God from whom all blessings flow!

Scan the QR codes with your phone camera to read an excerpt from *Canoeing the Mountains* or to read the articles from the Congregational Consulting Group.



### Task Force Members

- |                 |                   |
|-----------------|-------------------|
| PASTOR DAVID    | BRIAN LAPPING     |
| DAVE BOLLMANN   | CLAYTON MATTSO    |
| SHARI BUCKELLEW | KATIE GAREE       |
| STEVE TERRY     | STEVEN GREGORY    |
| KERRI CORDRAY   | PASTOR JIM REENTS |
| AMY RADEMACHER  | LYN AHEARN        |
| JOEL MURPHY     | MASON CORDRAY     |
| MARK SCOTT      |                   |

## Got feedback?

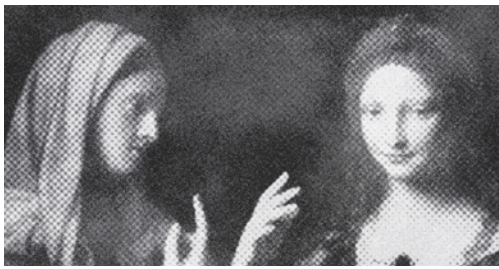
We want to hear from you! Please let us know how we are doing and what you would like to learn in future issues.

Let's keep *inTouch!*

### EDITORIAL BOARD

- Dawn Conway**  
conway.dawn@gmail.com
- Elizabeth Haines**  
elhtnthaines@gmail.com
- Roger Hellman**  
hellmanroger@msn.com
- Traci Monson**  
traci62@hotmail.com
- Sara White**  
swhite56@yahoo.com

**WORSHIP LOVE GROW GIVE**



## Dear Mary & Martha

Dear Mary and Martha,  
What are some of the ways that St. John's members and staff have been able to keep in touch with our members that have not been as active or visible this past year-and-a-half?—*Rachel, concerned member*

**Dear Rachel, St. John's had many regular ways to communicate and keep in touch with members prior to the pandemic and created a few new ones. Below is a list of a few of the systems and programs that are in place to keep in touch:**

- Member Care Ministry
- Card writers
- BeFrienders
- 70+ member contacts
- Daily and weekly e-mails; mail to those without e-mail access
- Phone calls as needed
- St. John's Together Facebook

**Blessings—Mary**

**Dear Rachel, My sister covered many of the organized ways that St. John's has kept in touch with our members. What is not mentioned is the many ways that individual members continued to reach out to others, but also the many who helped to continue the outreach missions of St. John's. Below is a sampling:**

- Junior/senior high online small groups
- Adult online small groups
- Zoom committee and council meetings
- Pastor's weekly online updates
- Daily Blessings
- Staff weekly zoom meetings
- Midwest food bank volunteers

**Blessings—Martha**

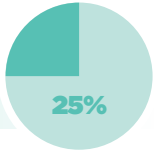
Submit your questions to [intouch@stjohnsbloomington.org](mailto:intouch@stjohnsbloomington.org).

## Where does my offering go?

Part of your offering goes to the Evangelical Lutheran Church in America (ELCA) from our local Central Southern Illinois Synod (CSIS). St. John's pledge for 2021 was \$120,000. Information is available on their website [www.csis-elca.org](http://www.csis-elca.org). We are part of a 9,300 congregation network in the United States and Caribbean that give about \$1.75 billion in offering support to ELCA ministries, locally and worldwide. Below are the categories and an example of each; this is just the tip of the iceberg.

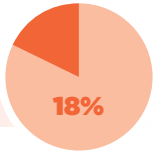
### GROW THE ELCA

We work together with our African Descent, American Indian and Alaska Native, Arab and Middle Eastern, Asian and Pacific Islander, and Latino/Latina members to develop networks and resources for ministry.



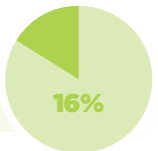
### GROW THE LUTHERAN CHURCH AROUND THE WORLD

We help send 230 missionaries to more than 48 countries, including more than 84 Young Adults in Global Mission in 11 country programs.



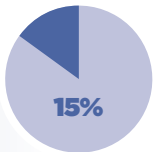
### COORDINATE AND SUPPORT CHURCHWIDE MINISTRIES

We fund office space, equipment and human resources for staff and operations.



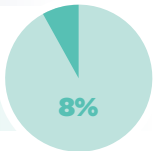
### SUPPORT AND DEVELOP FUTURE AND CURRENT ELCA LEADERS

We help fund seven seminaries and 26 colleges and universities.



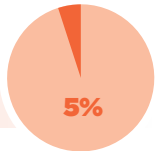
### INVEST IN COMMUNICATION AND TECHNOLOGY

We help connect people through technology; important given what happened in 2020!



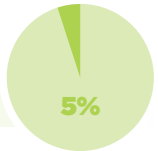
### GOVERNANCE AND LEADERSHIP

We organize lay and clergy leaders, coordinate meetings, and support for 65 synodical bishops.



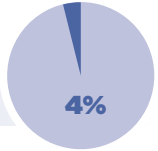
### GROW AND SUSTAIN FINANCIAL RESOURCES

We develop stewardship education, financial literacy and mission growth to all church ministries.



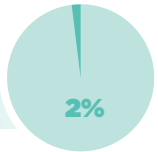
### SOCIAL ISSUES AND WORK FOR JUSTICE

We equip leaders and members to advocate with lawmakers in support of justice and peace.



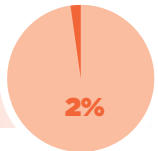
### RESEARCH AND STRATEGIC PLANNING

We research and analyze trends that impact the ELCA and develop strategies to improve ministry in the 21st century.



### ECUMENICAL AND INTERFAITH RELATIONSHIPS

We facilitate dialogue and common actions among communities of other faiths and seek unity with all Lutherans and six full Communion partners.





# Mission Impact

KERRI CORDRAY AND ELIZABETH HAINES

## Worship, Love, Grow, Give

St. John's youth spent parts of the Summer of 2021 living into these Core Values.

### Local Work Camp

In June a group of thirty people served in the church and local community to bless the lives of others through this camp. St. John's youth and adults worked on outdoor projects around the church, building and painting a picnic table, fire pit, and benches for use in the youth outdoor gathering space. They also worked on the landscaped area around the circle drive and thoroughly cleaned the kitchen. Service projects were also completed at Midwest Food Bank (packing and shipping food across the country and cleaning their landscaping) and Center for Hope (cleaning and organizing closets and clothing donations and serving food donations to guests).

### Junior High Mix Camp

The first week of July junior high students spent a week on the Indiana Wesleyan campus at Camp Mix, sponsored by Christ in Youth. They spent time in Scripture lessons and participated in praise and worship with youth from around the country. It was a powerful week of connection and of the love of Jesus Christ who is "FOR ALL, FOREVER!"

### Work Camp

In July a team of 16 adults and high school youth traveled to Lincoln, Illinois, to work on house painting projects for two residents, Barbara and Dorothy. The experience challenged them to trust in God through stifling heat and other obstacles. By week's end, Barbara's house was beautifully painted, which gave her immense joy! Dorothy's home was nearly completed and the local Lincoln community finished the remaining work. Both women felt the love of St. John's youth through their gifts of service.

We are blessed to have dedicated youth, who embrace the love of Christ.





St. John's Lutheran Church  
1617 East Emerson Street  
Bloomington, IL 61701

# STAFF SPOTLIGHT

## Sherri Lewis Noah's Ark Preschool Director

Sherri enjoys her role because she has the opportunity to build relationships with other staff, preschool parents, and especially the children. She considers it a great way to serve the community and the church. The Pancake Pigout fundraiser gives the congregation and community a glimpse into the preschool every year. Before the pandemic an art show was added, called "Pigcasso," so the congregation could view the children's work. During the pandemic, the children created and sent Valentines to the seniors in the Caring Connections program and made May Day cards. Sherri reports that, "kids bring so much joy to me, and I want to share that joy with others."

Faith has always been an important part of Sherri's life. She enjoys watching St. John's worship services and feels that the pandemic has given people more options for worship. She sometimes watches multiple services in one sitting! She also appreciates that everyone is welcome at St. John's. "God loves everyone no matter what you think or what you look like."

Sherri wrote a grant this summer for the preschool. An outdoor classroom was created with the grant money with the help of Eagle Scout Zach Davis. He and fellow scouts installed a balance beam, jumping stumps, water tables, a mud kitchen, and he is working on chalk boards and a sign for the ark in the playground.

Sherri's post-pandemic dream is to do more with the congregation. She would love to have extra hands to help and people to read to the kids.



# Q&A

### Where was your first job?

Girl Scout camp counselor by Peoria, then assistant camp director by Joliet. Several years later I worked as director of a preschool, Little Peoples. I've worked at a bank, as a family child care provider, taught, and was a manager at Head Start for 15 years. I've tried a variety of jobs, but God keeps pulling me back to the kids.

### What is your favorite holiday?

Thanksgiving—kick back and enjoy. I love dressing and mashed potatoes, but I also make a pretty mean turkey.

### Favorite vacation spot?

Table Rock Lake in Branson. As a kid, we would fish and boat. Now I love going to the shows.

### Favorite television binge?

Cardinal games; we are a sports family and we work at ISU as ushers for games.